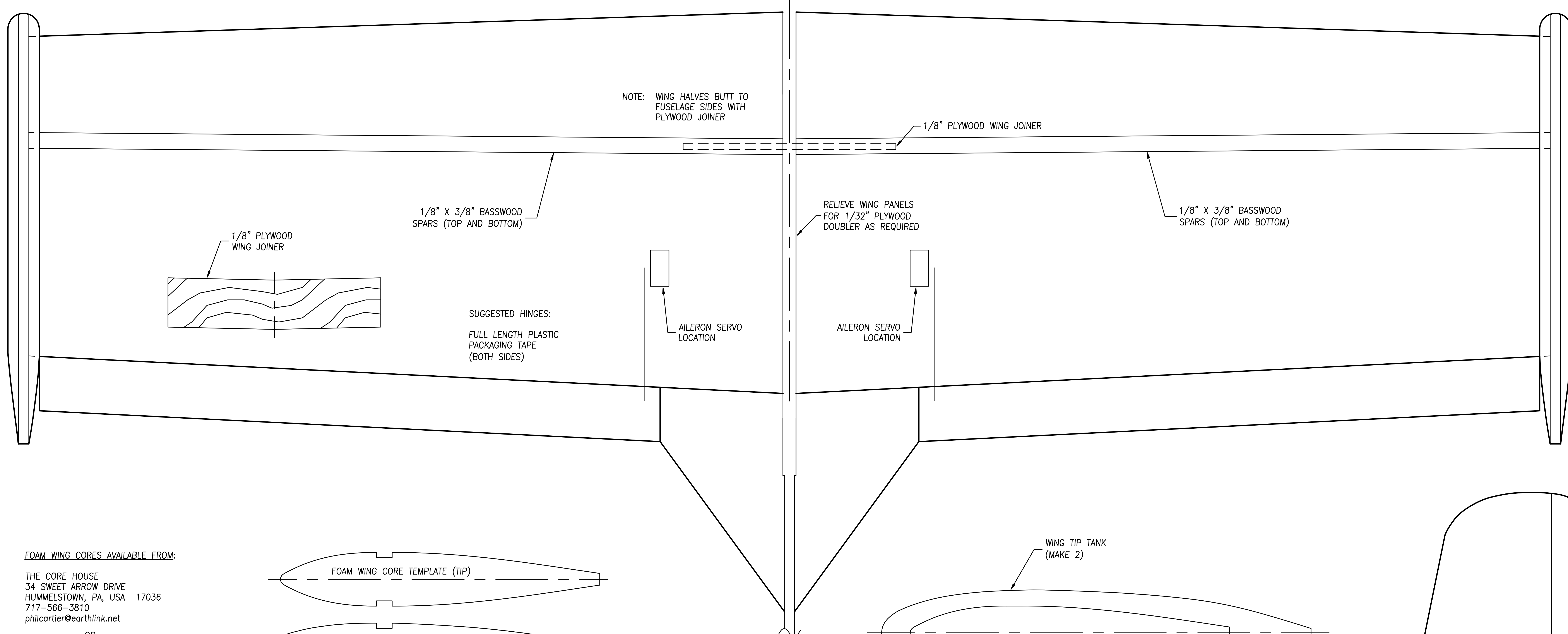


FUSELAGE, TAIL SURFACES, ALERONS, AND WING TANKS, MADE OF 5MM OR 1/4":

BALSA PRODUCTS FOAM OR - INSULATION FOAM OR - DEPRON OR - MIDWEST CELLFOAM 88

NOTE: WING HALVES BUTT TO FUSELAGE SIDES WITH PLYWOOD JOINER

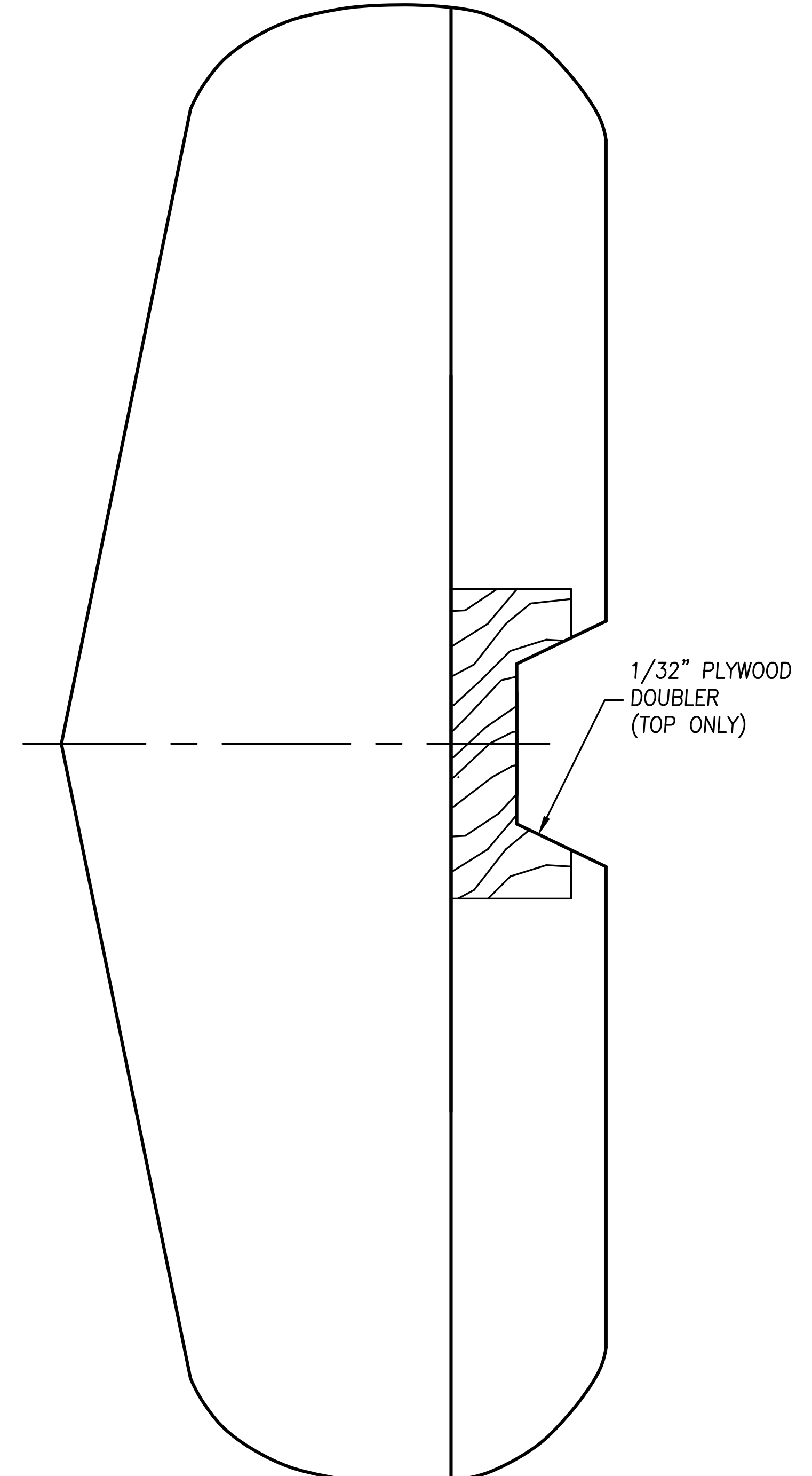
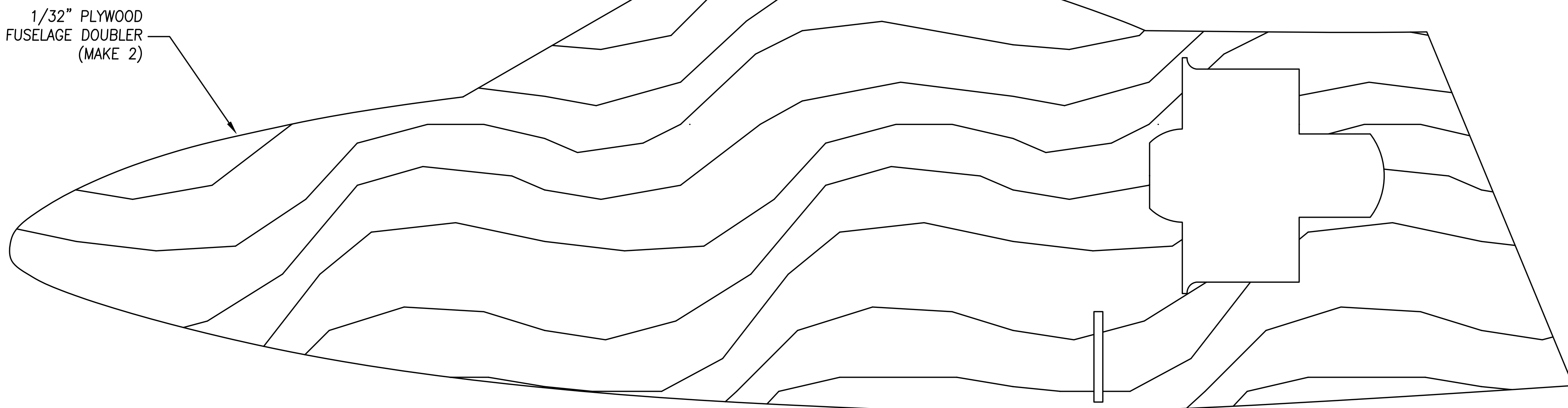
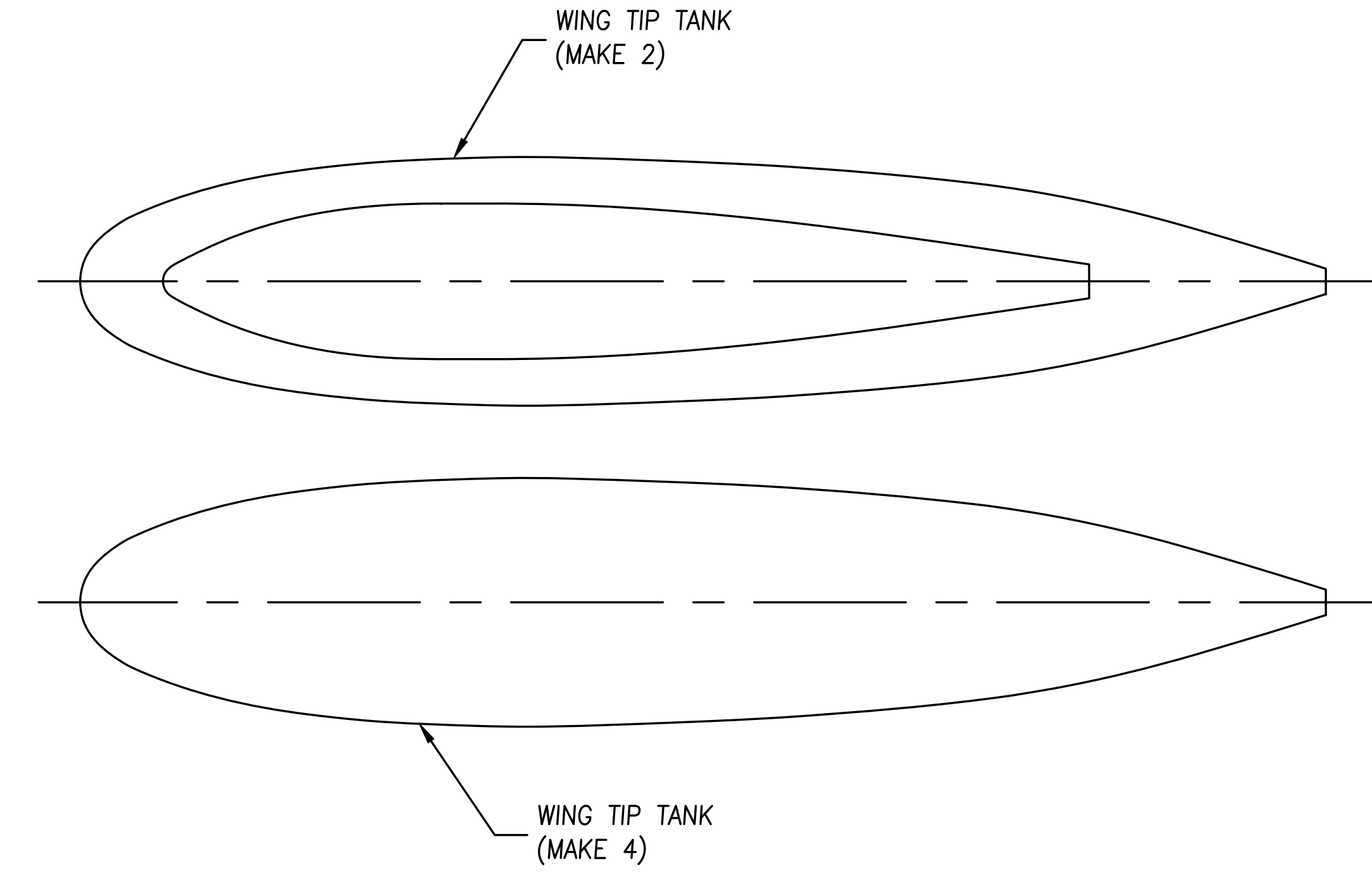
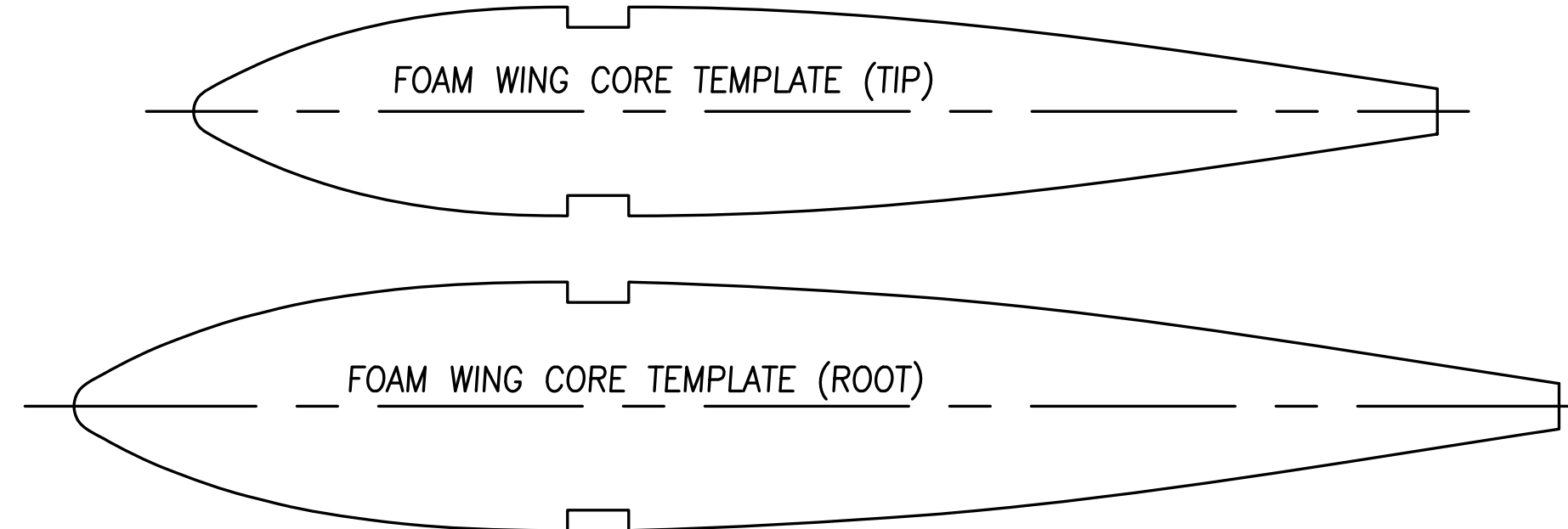


FOAM WING CORES AVAILABLE FROM:

THE CORE HOUSE  
34 SWEET ARROW DRIVE  
HUMMELSTOWN, PA, USA 17036  
717-566-3810  
philcartier@earthlink.net

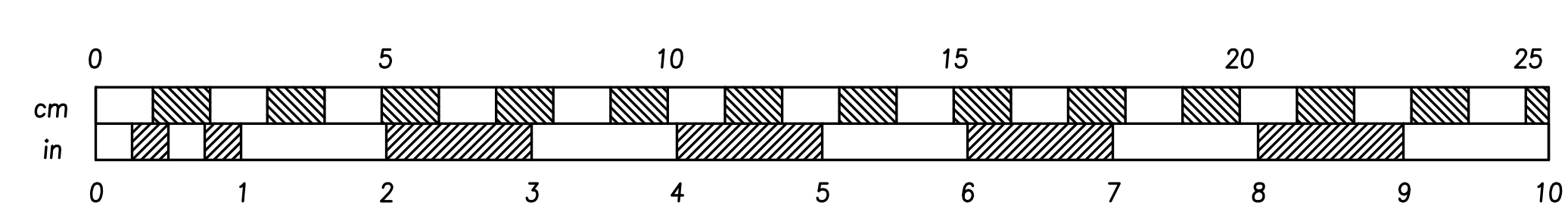
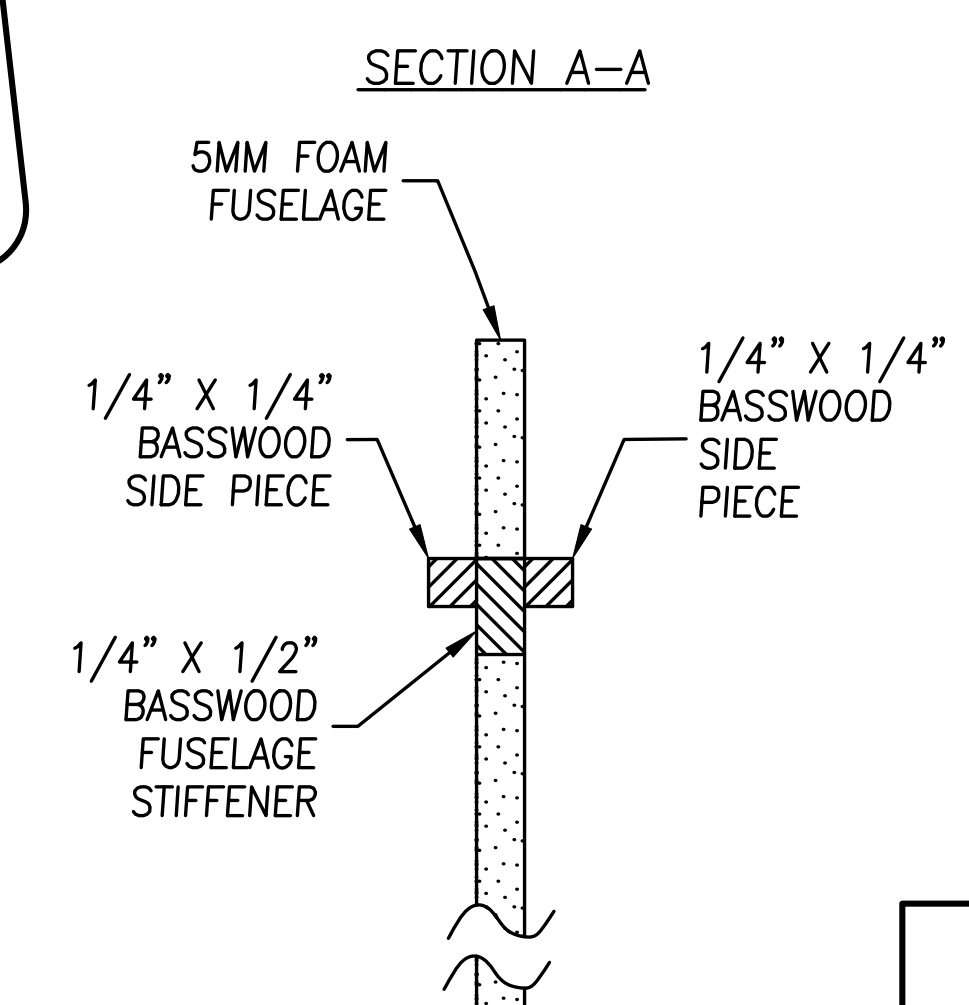
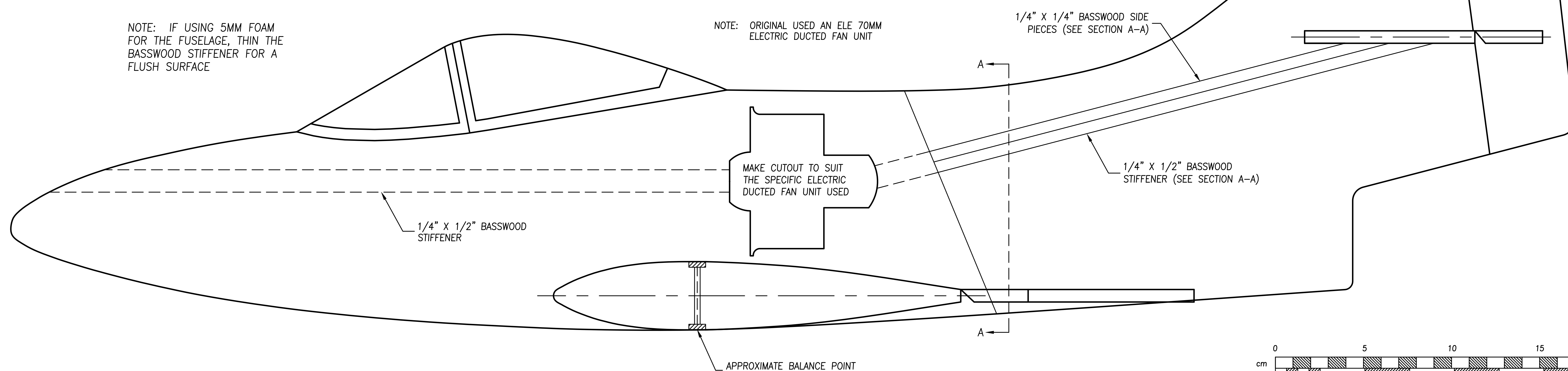
OR

ROBIN'S VIEW PRODUCTIONS  
PO BOX 68  
STOCKERTOWN, PA, USA 18083  
610-746-0106  
robinhunt@ren.com



NOTE: IF USING 5MM FOAM FOR THE FUSELAGE, THIN THE BASSWOOD STIFFENER FOR A FLUSH SURFACE

NOTE: ORIGINAL USED AN ELE 70MM ELECTRIC DUCTED FAN UNIT



PARK PILOT MAGAZINE  
GRUMMAN F9F PANTHER  
ELECTRIC POWERED FUNSPORT R/C

WING SPAN: 37 3/8"  
LENGTH: 35"  
WING AREA APPROX: 350 SQI  
DESIGNED BY: DICK SARPOLUS  
CAD BY: BOB KRUGER  
REVISION 1.01 14 MAR 2012 SHEET 1 OF 1