

Materials:
5-6mm foam (Depron, etc)
1/16" ply
2mm carbon rod
.039 music wire

Electronics used:
Suppo 2204/19 motor
HobbyKing 8A ESC
APC 8x3.8 prop
9g servos
2s 1050mAh lipo

Park Pilot Magazine

EZ-Cruiser

Wingspan: 39"

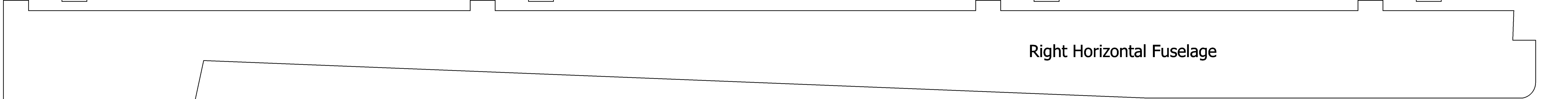
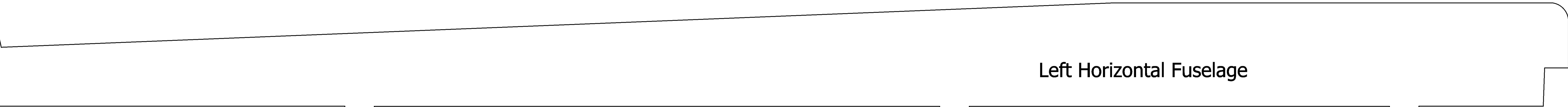
Length: 30 3/4"

AUW: 8 1/2 oz

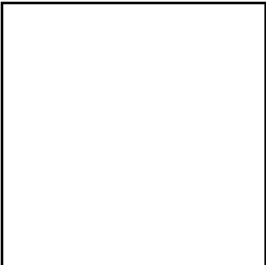
Designed and drawn by Andy Reynolds

October 31, 2011

Sheet 1 of 1



1/16" ply
motor mount



Wing Rib (cut 4)



Dihedral: 1 1/2" at each wingtip
Position outer ribs 9 5/32" from wingtips
2mm carbon struts, 11" long

